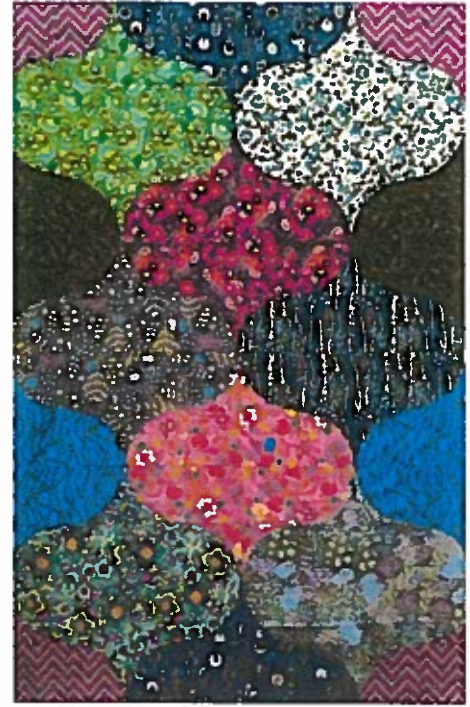


Lanterns

Level of Experience: Beginner to Advanced

Approximate Finished Size: 44" x 66" (without border)
57" x 79" with borders

Come learn how to LOVE sewing curves! No worries if you've not a fan OR if you prefer straight seams, you will leave happy! Come ready to sew, sew, sew! Learn exciting new piecing techniques for curves and create your own quilt! Quarter arc blocks are used to make the blocks - then the fun begins by building them into the lantern shapes. I used my Circle Savvy Ruler to cut arcs, however a template is provided in the pattern.



Fabric Tips: Choose a variety of small to medium scale prints that contrast well from one to the next.

Supplies

Pattern: Lanterns by Karla Alexander
Sewing Machine in good working order
Basic rotary cutting and sewing supplies
Square Ruler, 7" or larger
OPTIONAL: 2 yards flannel for design wall

Fabric

Yardage for the Blocks:

1/2 yard of 4 different light value prints
1/2 yard of 4 different medium value prints
1/2 yard of 4 different dark value prints
3 yards fabric for backing (no border)
1/2 yard fabric for binding (no border)
3/8 yard fabric for inner border (optional)
1 yard for outer border (optional)
3 3/4 yards fabric for backing (with borders)
5/8 yard fabric for binding (with borders)

PLEASE PRE-CUT FABRIC FOR BLOCKS PRIOR TO CLASS

Cut a variety of rectangles from the 1/2 yard pieces:

Cut one strip 7" by length of fabric; cross-cut into 4 squares, 7" x 7". Remaining pieces will be cut in class.

You are welcome to view the finished quilt on my web site at www.saginawstreetquilts.com or email me with any questions at karlaalexander@mac.com. My books, patterns and specialty rulers are all available on my web site.